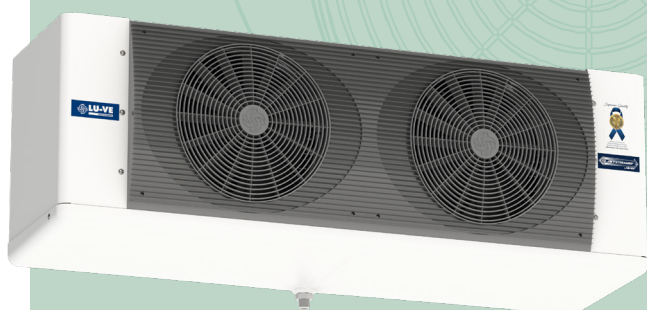




F31HC



F35HC



FHC

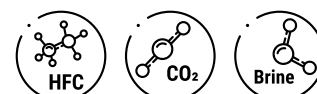
Benefits

- Extremely high efficiency of heat transfer.
- Extremely low internal volume of the circuit.
- Low noise level and energy consumption.
- Reduced dehumidification of the cold room.
- Reduced frost formation.
- Long air throw.
- Greatly reduced footprint.
- Two-year product guarantee

General information & application

FHC is the range of commercial unit coolers from LU-VE Exchangers, designed for optimal conservation of fresh and frozen goods.

Refrigerants



Capacity range (SC2 with R404)

1,450 up to 27,500 W

Air quantity

900 up to 10,400 m³/h

Coil

The very high-efficiency TURBOCOIL® heat exchangers have the best power/cost ratio obtainable.

- High-efficiency TURBOFIN® aluminum fins with special configuration of the louvre profile to reduce dehumidification and frost formation.
- High-efficiency small-diameter copper tubes with internal helical grooving, designed for optimal evaporation of the new refrigerant fluids.

Standard fin spacings 4.5, 6 and 7 mm.

Casing

Corrosion-resistant galvanized steel casing with epoxy-polyester powder coating RAL 9003. Dismountable and openable casing for cleaning and inspecting purposes.

Fan motors

1 to 4 fans fitted with high-efficiency AC or EC fan motors with incorporated thermal protection. Available in 3 fan diameters (275, 315 and 350 mm) drawing through the coil. Motors with external rotor for F31 and F35 models. Power supply 230/1/50-60. Fan motors are wired to a central connection box.

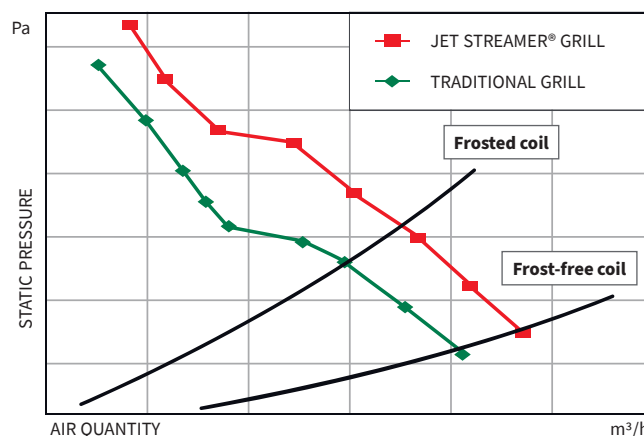
JET STREAMER®

LU-VE patented the JETSTREAMER® directional grill.

The innovative design of its profile provides:

- Uniform distribution of airflow through the coil.
- Significant increase in air quantity, both with frostfree coil (+4 to +9%) and with frost on the coil (+7 to +15%).

The improvement in air quantity during the frosting stage guarantees superior capacity and +25% air throw.





Dimensions

Model	n. of fans	Dimensions (mm)		
		A	B	C
F27HC	1	678	412	-
F27HC	2	1048	782	-
F27HC	3	1418	1152	-
F27HC	4	1788	1522	-
F31HC	1	760	492	415
F31HC	2	1210	942	415
F31HC	3	1660	1392	415
F31HC	4	2110	1842	415
F35HC	1	865	597	487
F35HC	2	1420	1152	487
F35HC	3	1975	1707	487
F35HC	4	2530	2262	487

Design pressure

Refrigerant	Max working pressure
HFC*	24 bar
CO ₂	60 bar**
Brine	10 bar

* Fluid group 2 according to EN 378; ** 85 bar in special execution

Each heat exchanger is leak tested with dry air and finally supplied with a dry air pre-charge.

Fitted with schröder valve on the suction connection for testing purposes (only for HFC and CO₂ units).

Options

- Electric defrost.
The stainless steel defrost elements are connected to dedicated terminal box.
- Drip tray heater.
- Fan shroud heater.
- Corrosion protection: pre-coated aluminium fins.
- EC fan motors: single speed for F27, dual speed or 0–10 V control input (0–10) for F31 and F35.
- Drip tray insulation.
- Suction hood.

Selection

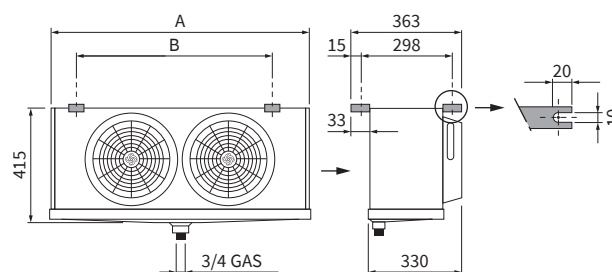
Selection and pricing is to be performed with our air heat exchanger selection software Refriger.

Selection output includes all relevant technical data and dimensional drawings.

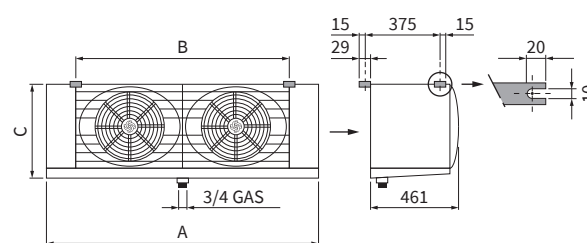
31639104EN-01

LU-VE Exchangers is a trademark registered and owned by LU-VE Group.
LU-VE Exchangers reserves the right to change specifications without prior notification.

F27HC



F31HC - F35HC



Certifications

The LU-VE Exchangers quality system is in accordance with ISO 9001. All products are manufactured according to PED regulations. LU-VE Group participates in the ECP program for HE. Check ongoing validity of certificate*: www.eurovent-certification.com



*Brine refrigerant is not covered by Eurovent certification

Code description

F35	H	C	W	1602	E	4	B
1	2	3	4	5	6	7	8

- 1 F=Future, 27=Ø 275 mm, 31=Ø 315 mm, 35=Ø 350 mm
- 2 H=Hitec®
- 3 C=Cubic
- 4 W=Glycol water
- 5 Model type
- 6 N=Air defrost, E=Electric defrost
- 7 Fin spacing: 4=4.5 mm, 6=6.0 mm, 7=7.0 mm
- 8 Circuit type (only for brine application)